



## Policy for the future:

Penta-Ocean Construction's corporate philosophy includes "creation of a nature-rich environment". In our business activities, we strive to contribute to the achievement of harmonized co-existence with nature by creating a thriving marine environment etc., in order to preserve global environment and conserve biodiversity.

Furthermore, we will undertake various initiatives including conservation of biodiversity etc. to develop a green infrastructure (a concept that aims to utilize the functions of the natural environment to solve diverse issues in human society), and to create a blue carbon ecosystem for achieving a decarbonized society.

In addition, we will endeavor to contribute to the realization of a society in harmony with nature in overseas countries where we provide our civil engineering and building construction services.

### ● Construction of a bridge with low impact on ecosystem function of the tidal flat at river mouth

In the Tamagawa Sky Bridge construction project, the shape of the tidal flat at the mouth of the Tamagawa river had to be altered by dredging. From the planning stage of the project, the team reviewed construction methods with the help of outside experts to incorporate designs considerate of bio-organisms of the tidal flat. By minimizing the impact of the construction and undertaking restorative measures, POC achieved early restoration of the tidal flat and conservation of the riverine ecosystem.



Tamagawa Sky Bridge



Crabs found in the tidal flat

### ● Construction of artificial tidal flats

Oshima tidal flats (Shunan City, Yamaguchi Pref.) were built by utilizing dredged soil in order to provide habitat for native clams. After the tidal flat construction, succession of biota and changes in the bottom environment were continuously monitored to help protect the tidal flat for future generations. The eelgrass beds have now taken roots and constitute a blue carbon ecosystem.



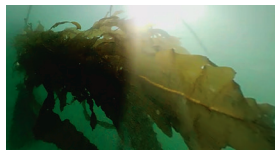
Oshima tidal flats



Eelgrass beds and baby rockfish

### ● Development of artificial grounds for kelp cultivation

One of our initiatives to promote healthy growth of seaweeds is the development of a seabed ground using artificial stones made from dredged soil. The grown seaweed is expected to fix CO<sub>2</sub> and serve as habitats for diverse bio-organisms.



Cultivation of Wakame seaweed

### ● Participation in tree planting initiatives

To ensure preservation of rich nature in Madagascar, POC participated in a tree planting volunteer initiative organized by the Madagascar Ministry of Environment.



A tree planting program